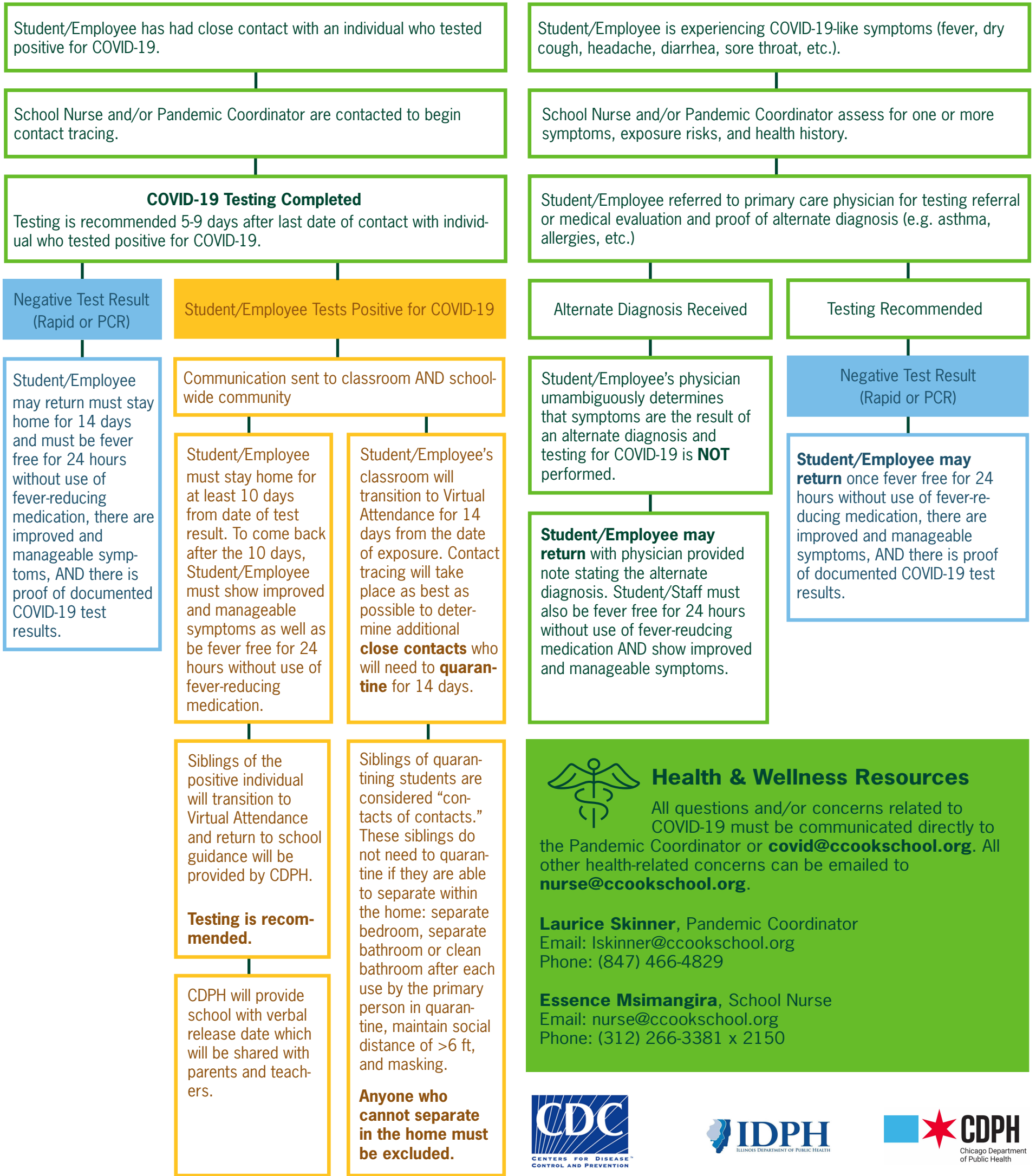


# Guidelines for COVID-19 Decisions



**Close Contact**  
 Any individual who was within 6 feet of an infected person for at least 15 minutes starting from 2 days before illness onset (or for asymptomatic patients, 2 days prior to positive specimen collection) until the time the patient is isolated.

**Quarantine**  
 A period of isolation that separates and restricts the movement of people who were exposed to a contagious disease to see if they become sick.

**Health & Wellness Resources**  
 All questions and/or concerns related to COVID-19 must be communicated directly to the Pandemic Coordinator or [covid@ccookschool.org](mailto:covid@ccookschool.org). All other health-related concerns can be emailed to [nurse@ccookschool.org](mailto:nurse@ccookschool.org).

**Laurice Skinner**, Pandemic Coordinator  
 Email: [lskinner@ccookschool.org](mailto:lskinner@ccookschool.org)  
 Phone: (847) 466-4829

**Essence Msimangira**, School Nurse  
 Email: [nurse@ccookschool.org](mailto:nurse@ccookschool.org)  
 Phone: (312) 266-3381 x 2150



Catherine Cook considers information from all agencies, but must adhere to local guidelines from CDPH for decision making.  
 Information is subject to change with updated guidance.

